

[home](#)[about us](#)[books](#)[links](#)[jobs](#)[contact us](#)

## Jetson Green

**A daily updated magazine that's obsessed with green building and everything related to it, including sustainable architecture, good design, green prefab, and eco-friendly development.**

### Modern LEED Living at The Crossing

By Preston Koerner | June 4, 2010 | topics: [LEED](#), [Multifamily](#), [Residential](#)



Recently [The Crossing Apartments](#), a luxury, transit-oriented development seeking LEED Silver certification, opened in Anaheim, California. The project, designed by [KTCY Group, Inc.](#), includes 39 live/work units and 312 lofts and one- and two-bedroom units in a contemporary and eco-friendly setting.



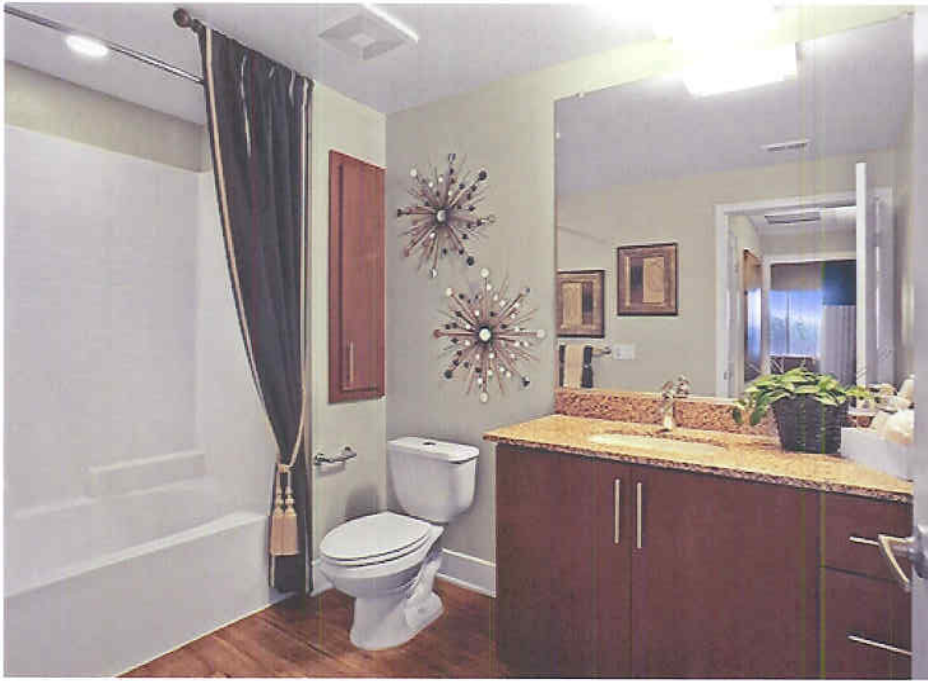
Green aspects include a cool roof, storm water recapture, energy-efficient windows, water-saving fixtures, high-efficiency dual flush toilets, CFLs, Energy Star appliances, low-VOC paints, low-VOC carpeting made from 100% post-recycled content, a ventilation system, and a community recycling program.

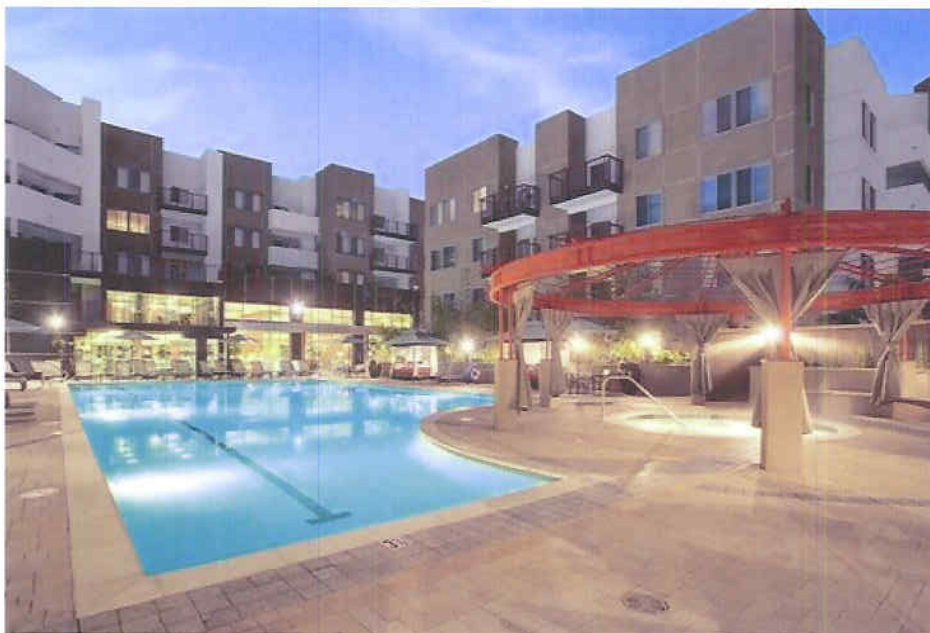
Located at 3530 E. La Palma Avenue, The Crossing is a smoke-free residential community with parking for more than 120 bicycles and preferred parking for fuel-efficient vehicles.

During construction, developer SARES•REGIS diverted roughly 94% of demolition waste from the landfill and achieved a recycling rate of 74% during construction.

The Crossing has pretty much everything one could ask for with a health club fitness center, free wifi in the common areas, outdoor gathering areas, and a dazzling pool and spa area. Units range in size from 639 to 1,421 square feet and in rent from \$1,320 to \$2,165 per month.







[+] [Learn more about The Crossing at Apartments in Anaheim, California.](#)

*Photo credits: SARES•REGIS.*

By Preston Koerner | [link](#) | [rss](#)

9 retweet

[EMAIL](#)